



TOOLS & WELDING

2018



Ask For Our LATEST
WELDClass PRODUCT CATALOGUE
LISTED OVER 130 PAGES OF
WELDING PRODUCTS HERE IS JUST A SAMPLE



EARTH CLAMPS



TIG CERAMIC



WELDING CURTAINS



TEFLON LINERS



MIG WIRE ALUMINIUM



MIG TORCHES



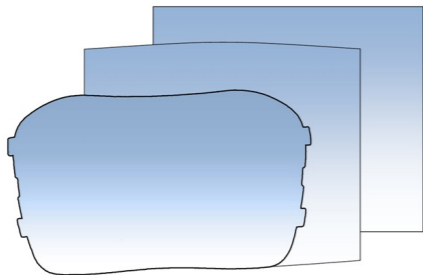
ELECTRODES



REGULATORS



NOZZLE DIP GEL



LENSES FOR WELDING HELMETS
• INNER
• OUTER
ALL WE NEED IS THE
HELMET BRAND
HELMET MODEL
AND THE LENS DIMENSION

WELDING HELMETS



New

WC-05314
PROMAX 350 (Fire)

- MIG & STICK
- TIG >30 AMPS
- GRIND-MODE
- SHADE RANGE 9-13
- HIGH-IMPACT RATED
- VIEW AREA 100x53mm

WC-05314
PROMAX (FIRE)

WC-05313
PROMAX (BLUE)

Our most popular auto-darkening welding helmet. The PROMAX 350 electronic welding helmet is suitable for MIG, Stick & TIG welding. Stand-out features include; 4 sensors for reliable switching & a generous viewing area, larger than many other helmets in this class. Variable Shade 9-13, Sensitivity & Delay Adjustments, Grind-Mode switch, replaceable battery, magnification lens holder & more. Comfortable, very lightweight & superior optics

HAVE A WELDING LENS THATS NEEDS REPLACING
WE HAVE A LARGE RANGE OF REPLACEMENTS LENS
JUST ASK US



New

WC-05317
PROMAX 500 (Stealth)

- MIG & STICK
- TIG >5 AMPS
- GRIND-MODE
- SHADE RANGE 5-8/9-13
- HIGH-IMPACT RATED
- VIEW AREA 98x87mm
- Replacements Lens-Yes

WC-05317
PROMAX (STEALTH)

WC-05311
PROMAX (SILVER)

The auto-darkening welding helmet with Super Size Viewing area & more value than you can poke a MIG, TIG or Stick at! PROMAX 500 stand-out features include; Massive 98x87mm Viewing area, 4 sensors for reliable switching, Dual Shade 5-8/9-13, Sensitivity & Delay Adjustments, Grind-Mode switch, Replaceable Battery, Magnification Lens Holder & more. Comfortable, lightweight & superior optics

The PROMAX 200 electronic welding helmet is designed for light-medium fabrication & occasional MIG & Stick Welding. Controls include Variable Shade 9-13, Sensitivity & Delay Adjustments, plus Grind-Mode switch.



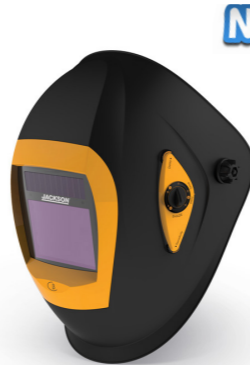
WC-05313
PROMAX 350 (Blue)

- MIG & STICK
- TIG 30 AMPS
- GRIND-MODE
- SHADE RANGE 9-13
- HIGH-IMPACT RATED
- VIEW AREA 100x53mm



WC-05311
PROMAX 200 (Silver)

- MIG & STICK
- SENORS: 2
- GRIND-MODE
- SHADE RANGE: 9-13
- HIGH-IMPACT RATED
- VIEW AREA 96x39mm
- Replacements Lens-Yes



New

WC-KCJ9916
JACKSON WH70

- MIG & STICK
- TIG >1 AMPS
- GRIND-MODE EXTERNAL
- SHADE RANGE 6-8/9-13
- HIGH-IMPACT RATED
- VIEW AREA 96x69mm
- Replacements Lens-Yes

WC-KCJ9916
JACKSON WH70

WC-KCJ5225/K
JACKSON WH70
AIRMAX

The JACKSON WH70 is an undisputed world leader among auto-darkening welding helmets. World's Best Vision (1/1/1/1/ optical rating), Worlds Best Warranty (5 years), superior European Quality & Reliability, Super Intelligent Sensing, Large view area & more. Expect an amazingly crisp view of the weld, exceptional comfort & ultra reliable switching.

The JACKSON WH70 Airmax is an undisputed world leader among respiratory (PAPR fresh air) welding helmets. Worlds Best lens Warranty (5 years), Advanced Airmax respirator, superior European Quality & Reliability, Unique Comfort Face Seal system, Super Intelligent Sensing, Large view area Expect exceptional comfort, an amazingly crisp view of the weld, ultra reliable switching.



New

- WC-KCJ5225/K
JACKSON WH70 AIRMAX
- MIG & STICK
 - TIG >1 AMPS
 - GRIND-MODE EXTERNAL
 - SHADE RANGE 5-8/9-13
 - POWER RESPIRATOR
 - VIEW AREA 96x69mm
 - Replacements Lens-Yes

RIGGERS GLOVES



New

CODE	DESCRIPTION
WC-8WRM (MEDIUM)	Standard rigger gloves? Think again! Instead of standard cotton stitching, PROMAX KR series riggers are stitched with Kevlar for superior resistance to abrasion, heat & general wear. Plus we only use premium A-grade cowhide leather & apply strict QC controls to every batch. The result? A longer lasting glove especially suited to the rough & tumble of metal fabrication work!. Sold in Pairs
WC-8WRL (LARGE)	
WC-8WRXL (EX-LARGE)	
WC-8WR2L (2XL)	

WELDING APPAREL



PROMAX BL7 LEATHER

New

CODE	DESCRIPTION
PROMAX BL7	If you need the protection of a full leather welding jacket, you can't go past the "Promax BL7" ! A special design which offers up to 40% reduced weight and superior comfort - without compromising durability and long wear-life. Opening is off-set to avoid the high wear area directly in front of the operator. Hook and loop closure avoids the added weight and discomfort of metal studs. Extended back offers better protection when bending, kneeling, etc. Selected premium cow hide leather, kevlar stitching and fully welted seams for longer garment life. Adjustable cuffs & collar.
WC-01782 (MEDIUM)	
WC-01781 (LARGE)	
WC-01783 (X-LARGE)	
WC-01784 (2XL)	



PROMAX BLUE FLAME

New

PROMAX BLUE	The Hot Looking Jacket for Welders who know how to keep their Cool! Comfortable, Affordable & Looks Great. Sewn with heat resistant Kevlar thread for durability.
WC-01797 (MEDIUM)	
WC-01798 (LARGE)	
WC-01799 (X-LARGE)	
WC-01800 (2XL)	

EARPLUGS & MUFFS



New

CODE	DESCRIPTION
WC-05377	Popular tapered-fit ear plugs. Soft foam for comfortable fit. Rated to AS/NZS1270 class 5. 1 Box of 200 Pairs Sold In box lots only



New

WC-P7EMC4	Earmuff 24dB
-----------	--------------



Ask For Our LATEST
WELDCLASS PRODUCT CATALOGUE
LISTED OVER 130 PAGES OF
WELDING PRODUCTS



SAFETY GLASSES



WC-7ACS (Smoke)

ACE-Type Safety Glasses

WC-7ACC (Clear)

Popular everyday safety spec. Comfortable, close fitting design for maximum protection. Full UV protection, hard-coat anti-scratch lens.

WC-7ACA (Amber)



SAFETY SPEC- ACE

- SMOKED
- CLEAR
- AMBER

PROMAX-Type Safety Glasses

WC-7BZS (Smoke)

Seriously safe, seriously comfortable! Unique safety eye wear which combines the comfort & convenience of a safety spec with the protection of a goggle. Face seal gasket protects like a goggle, prevents particles entering from the sides. Can be worn either with arms or strap. Light weight, comfortable & cost-effective.

WC-7BZC (Clear)

WC-7BZA (Amber)



SAFETY SPEC- PROMAX

- SMOKED
- CLEAR
- AMBER

WITH BONUS STRAP & POUCH

New

WELDING GLOVES



- PROMAX BLUE 400mm Standard
- PROMAX BLUE LEFT 400mm Left Hand 1 Pair

CODE	DESCRIPTION
WC-01778 (PROMAX BLUE)	Standard blue welding gloves? Think again! PROMAX BLUE welders gloves are crafted for excellent comfort & fit. Sold as 1 pair
WC-01777 (PROMAX BLUE LEFT HAND)	

WC-01774
(PROMAX BLUE XC)

680mm extended-length welding gloves, for full arm protection. Crafted for excellent comfort & fit, using premium quality leather. Sold as 1 pair



- PROMAX BLUE XC 680mm
- Extra Length



- PLATINUM TIG-21 360mm

WC-04676
(Platinum TIG)

Standard TIG welding gloves? Think again! PLATINUM TG-21 gloves are preferred for their excellent dexterity/feel, great fit/comfort and superior construction. Sold as 1 pair

New

TOOLS GENERAL

TAPES



New

CODE	DESCRIPTION	CTN
T-17744	METRIC 8 METERS TAPE MEASURE	1 Only
T-17747	METRIC 10 METERS TAPE MEASURES	1 Only

* Pictures For Display Purposes Only

SPIRIT LEVELS



TYPE 2 80A
2 VIAL

CODE	DESCRIPTION
T-80A/60 (600mm)	Aluminium rectangular profile with reinforcing ribs – for high stability and secure hold while working. Spirit level with one precision-milled measuring surface does not leave behind any discolorations on the surface for example, on fair-faced brickwork.
T-80A/100 (1000mm)	
T-80A/120 (1200mm)	



PRO- BELT CLIP

MAGNETIC

CODE	DESCRIPTION
T-17773 (Plastic)	Plastic mini-format spirit level Strong rare-earth magnet system for adhesion to metal objects – leaves the hands free for alignment and adjustment. Available In: Basic, Magnetic, Pro Magnetic.
T-17774 (Magnetic)	
T-17768 (Pro)	



TYPE70TM
MAGNETIC

CODE	DESCRIPTION
T-70TM/25 (250mm)	Magnetic strip for adhesion to metal objects. Comfortably light aluminium rectangular profile. Easy to clean thanks to the smooth sides and electrostatic powder coating.
T-70TMW/25 (250mm)	

MARKERS



CODE	DESCRIPTION
T-6-EC755	75x10x5mm Split 100pcs/box (Engineering Chalk)
T-PO20020	Carpenters Pencils
T-NLF60	Black Markers

* Pictures For Display Purposes Only

ALL PRICING REFER TO PRICE BOOK PLEASE QUOTE CODES WHEN ORDERING

TOOL GENERAL

CLAMPS



Quick Action Clamp All Steel
Ratchet GH

Vibration resistant non slip clamping at its very best. The cam ratchet lever handle is locked into position and cannot release.

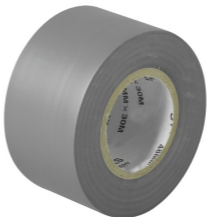


Quick Action Clamp All Steel
General Purpose GZK

New fully heat treated optimised profile rail design that delivers 20% more pressure per spindle rotation than the original Bessey clamp profile rail.

CODE	DESCRIPTION
T-G20ZKN (200x100mm)	The fixed clamp is forged from a single piece with moulded pressure plate is hardened, tempered and galvanised, making it highly durable and torsion resistant. Clamping force up to 6,000N
T-G25ZKN (250x120mm)	
T-G30ZKN (300x140mm)	
T-G20H (200x100mm)	The cam ratchet lever handle is locked into position and cannot release. New fully heat treated optimised profile rail design. The fixed clamp is forged from a single piece with moulded pressure plate is hardened, tempered and galvanised, making it highly durable and torsion resistant. Fingertip trigger release control.
T-G25H (250x120mm)	
T-G30H (300x140mm)	
T-G40H (400x120mm)	

ACCESSORIES



CODE	DESCRIPTION
T-DUCTTAPE	Duct tape 48mmx30 meters. General purpose



T-K13000	Retractable Utility Knife
----------	---------------------------



T-RBL8810	Fluro string line 100 meters
-----------	------------------------------

* Pictures For Display Purposes Only

ALL PRICING REFER TO PRICE BOOK PLEASE QUOTE CODES WHEN ORDERING