

STAINLESS STEEL

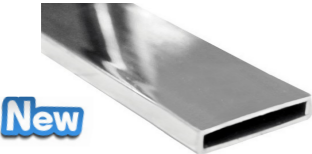
2018

TUBE & BENDS

TUBING



* STAINLESS STEEL 316 - MIRROR POLISH



* STAINLESS STEEL 316 - MIRROR POLISH

* NOTE: LENGTHS 6000mm OR GREATER WILL INCUR A FREIGHT SURCHARGE

90°



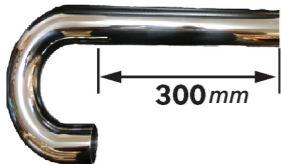
* 316 GRADE STAINLESS STEEL

180°



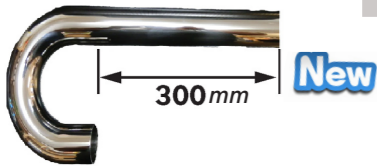
* 316 GRADE STAINLESS STEEL

180° With TAIL



* 316 GRADE STAINLESS STEEL

180° + TAIL + CAP



* 316 GRADE STAINLESS STEEL

CODE	DIAMETER	WALL	LENGTH	FINISH
SS-TUBE-316-25	25.4mm	1.5mm	6000mm	MIRROR
SS-TUBE-316-38	38.1mm	1.5mm	6000mm	MIRROR
SS-TUBE-316-50	50.8mm	1.5mm	6000mm	MIRROR

CODE	SIZE	WALL	LENGTH	FINISH
SS-TUBE-316-5010	50x10mm	1.5mm	6000mm	MIRROR
SS-TUBE-316-5025	50x25mm	1.5mm	6000mm	MIRROR

CODE	O.D	FINISH	WALL THICKNESS	RADIUS CENTER
SB316 38x1.6x90	38.1mm	SATIN	1.6mm	57mm
SB316 51x1.6x90	50.8mm	SATIN	1.6mm	76mm

SB316 38x1.6x180	38.1mm	SATIN	1.6mm	57mm
SB316 51x1.6x180	50.8mm	SATIN	1.6mm	76mm
SB316 38x1.6x180/P	38.1mm	POLISH	1.6mm	57mm
SB316 51x1.6x180/P	50.8mm	POLISH	1.6mm	76mm

CODE	O.D	FINISH	WALL THICKNESS	RADIUS CENTER
SB316 38x1.5x180/300P	38.1mm	POLISH	1.5mm	57mm
SB316 51x1.5x180/300S	50.8mm	SATIN	1.5mm	76mm
SB316 51x1.5x180/300P	50.8mm	POLISH	1.5mm	76mm

CODE	O.D	FINISH	WALL THICKNESS	RADIUS CENTER
SB316 38x180/300P/CAP	38.1mm	POLISH	1.6mm	57mm
SB316 51x180/300P/CAP	50.8mm	POLISH	1.6mm	76mm

ALL PRICING REFER TO PRICE BOOK PLEASE QUOTE CODES WHEN ORDERING

BALUSTRADE

JOINERS



* FLUSH JOINER 90 DEGREE 316 (RADIUS)



* FLUSH JOINER 90° 316



* FLUSH JOINER 135° 316



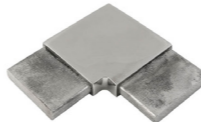
* FLUSH JOINER IN-LINE 316



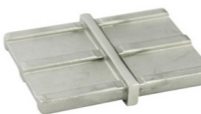
* FLUSH JOINER EQUAL TEE 316



* FLUSH JOINER TEE 316



* 316 STAINLESS STEEL



* 316 STAINLESS STEEL

CODE	TUBE SIZE	WALL THICKNESS	DEGREE	FINISH
SS-2001E	50.8mm	1.6mm	90°	MIRROR
SS-1501E	38.1mm	1.6mm	90°	MIRROR

SS-2002E	50.8mm	1.6mm	90°	MIRROR
SS-1502E	38.1mm	1.6mm	90°	MIRROR

SS-2003E	50.8mm	1.6mm	135°	MIRROR
SS-1503E	38.1mm	1.6mm	135°	MIRROR

CODE	TUBE SIZE	WALL THICKNESS	DEGREE	FINISH
SS-2004E	50.8mm	1.6mm	IN-LINE	MIRROR
SS-1504E	38.1mm	1.6mm	IN-LINE	MIRROR

SS-2005E	50.8mm	1.6mm	TEE	MIRROR
SS-1505E	38.1mm	1.6mm	TEE	MIRROR

SS-2006E	50.8mm	1.6mm	90°	MIRROR
SS-1506E	38.1mm	1.6mm	90°	MIRROR

CODE	TUBE SIZE	WALL THICKNESS	DEGREE	FINISH
SS-51002-RCT	50x10mm	1.6mm	90°	MIRROR
SS-52502-RCT	50x25mm	1.6mm	90°	MIRROR

SS-51004-RCT	50x10mm	1.6mm	IN-LINE	MIRROR
SS-52504-RCT	50x25mm	1.6mm	IN-LINE	MIRROR

ALL PRICING REFER TO PRICE BOOK PLEASE QUOTE CODES WHEN ORDERING

BALUSTRADE FITTING

JOINERS



* Flush Joiner 4 Way Tee 316



* Flush Joiner 4 Way Tee 316

ADJUSTABLE JOINERS



* Adjustable Bend Flush Joiner 316



* Adjustable 2 End Connector 316

WALL FLANGES



* 316 STAINLESS STEEL

New

SS-51014-RCT

50x10mm

1.6mm

BRACKET

MIRROR



* 316 STAINLESS STEEL

New

SS-52521-RCT

50x25mm

1.6mm

BRACKET

MIRROR

BALUSTRADE FITTINGS

FLANGES



* WALL & FLOOR 316



* WALL & FLOOR 316



* WALL STOP BASE FLANGE 316



* BASE FLANGE 90° 316

HANDRAIL ENDS



* 90° END 316



* 45° END 316



* 316 STAINLESS STEEL

New

SS-2026A

50.8mm

1.6mm

-

MIRROR

SS-2025A

50.8mm

1.6mm

-

MIRROR

SS-51019-RCT

50x10mm

1.6mm

-

MIRROR

SS-52519-RCT

50c25mm

1.6mm

-

MIRROR

BALUSTRADE FITTING

JOINERS



* Flush Joiner 4 Way Tee 316



* FLUSH JOINER 4 Way Tee 316

ADJUSTABLE JOINERS



* ADJUSTABLE BEND FLUSH JOINER 316



* ADJUSTABLE 2 END CONNECTOR 316

WALL FLANGES



* 316 STAINLESS STEEL

New

SS-51014-RCT

50x10mm

1.6mm

BRACKET

MIRROR



* 316 STAINLESS STEEL

New

SS-52521-RCT

50x25mm

1.6mm

BRACKET

MIRROR

BALUSTRADE FITTINGS

FLANGES



* WALL & FLOOR 316



* WALL & FLOOR 316



* WALL STOP BASE FLANGE 316



* BASE FLANGE 90° 316

HANDRAIL ENDS



* 90° END 316



* 45° END 316



* 316 STAINLESS STEEL

New

SS-2026A

50.8mm

1.6mm

-

MIRROR

SS-2025A

50.8mm

1.6mm

-

MIRROR

SS-51019-RCT

50x10mm

1.6mm

-

MIRROR

SS-52519-RCT

50c25mm

1.6mm

-

MIRROR

BALUSTRADE FITTING

JOINERS



* Flush Joiner 4 Way Tee 316



* FLUSH JOINER 4 Way Tee 316

ADJUSTABLE JOINERS



* ADJUSTABLE BEND FLUSH JOINER 316



* ADJUSTABLE 2 END CONNECTOR 316

WALL FLANGES



* 316 STAINLESS STEEL

New

SS-51014-RCT

50x10mm

1.6mm

BRACKET

MIRROR



* 316 STAINLESS STEEL

New

SS-52521-RCT

50x25mm

1.6mm

BRACKET

MIRROR

ALL PRICING REFER TO PRICE BOOK PLEASE QUOTE CODES WHEN ORDERING

BALUSTRADE FITTINGS

FLANGES



* WALL & FLOOR 316



* WALL & FLOOR 316



* WALL STOP BASE FLANGE 316



* BASE FLANGE 90° 316

HANDRAIL ENDS



* 90° END 316



* 45° END 316



* 316 STAINLESS STEEL

New

SS-2026A

50.8mm

1.6mm

-

MIRROR

SS-2025A

50.8mm

1.6mm

-

MIRROR

SS-51019-RCT

50x10mm

1.6mm

-

MIRROR

SS-52519-RCT

50c25mm

1.6mm

-

MIRROR

ALL PRICING REFER TO PRICE BOOK PLEASE QUOTE CODES WHEN ORDERING

BALUSTRADE FITTING

JOINERS



* Flush Joiner 4 Way Tee 316



* Flush Joiner 4 Way Tee 316

ADJUSTABLE JOINERS



* Adjustable Bend Flush Joiner 316



* Adjustable 2 End Connector 316

WALL FLANGES



* 316 STAINLESS STEEL

New

SS-51014-RCT

50x10mm

1.6mm

BRACKET

MIRROR



* 316 STAINLESS STEEL

New

SS-52521-RCT

50x25mm

1.6mm

BRACKET

MIRROR

ALL PRICING REFER TO PRICE BOOK PLEASE QUOTE CODES WHEN ORDERING

BALUSTRADE FITTINGS

FLANGES



* WALL & FLOOR 316



* WALL & FLOOR 316



* WALL STOP BASE FLANGE 316



* BASE FLANGE 90° 316

HANDRAIL ENDS



* 90° END 316



* 45° END 316



* 316 STAINLESS STEEL

New

SS-2026A

50.8mm

1.6mm

-

MIRROR

SS-2025A

50.8mm

1.6mm

-

MIRROR

SS-51019-RCT

50x10mm

1.6mm

-

MIRROR

SS-52519-RCT

50c25mm

1.6mm

-

MIRROR

ALL PRICING REFER TO PRICE BOOK PLEASE QUOTE CODES WHEN ORDERING

BALUSTRADE FITTING

JOINERS



* Flush Joiner 4 Way Tee 316



* FLUSH JOINER 4 Way Tee 316

ADJUSTABLE JOINERS



* ADJUSTABLE BEND FLUSH JOINER 316



* ADJUSTABLE 2 END CONNECTOR 316

WALL FLANGES



* 316 STAINLESS STEEL

New

SS-51014-RCT

50x10mm

1.6mm

BRACKET

MIRROR



* 316 STAINLESS STEEL

New

SS-52521-RCT

50x25mm

1.6mm

BRACKET

MIRROR

ALL PRICING REFER TO PRICE BOOK PLEASE QUOTE CODES WHEN ORDERING

BALUSTRADE FITTINGS

FLANGES



* WALL & FLOOR 316



* WALL & FLOOR 316



* WALL STOP BASE FLANGE 316



* BASE FLANGE 90° 316

HANDRAIL ENDS



* 90° END 316



* 45° END 316



* 316 STAINLESS STEEL

New

SS-2026A

50.8mm

1.6mm

-

MIRROR

SS-2025A

50.8mm

1.6mm

-

MIRROR

SS-51019-RCT

50x10mm

1.6mm

-

MIRROR

SS-52519-RCT

50c25mm

1.6mm

-

MIRROR

ALL PRICING REFER TO PRICE BOOK PLEASE QUOTE CODES WHEN ORDERING