

**GATE HARDWARE**  
**Gudgeons & Trunnions**

**2018**

GUDGEON & TRUNNIONS

12mm GUDGEON & TRUNNIONS



Trunnions

New



Gudgeon



Bush

20mm GUDGEON & TRUNNIONS



Trunnions



Large Gudgeon Plate



Welded Gudgeon Plate



Bush

CODE	MATERIAL	PIN SIZE	A	B	C	CTN
------	----------	----------	---	---	---	-----

H12T	ZINC PLATED	12mm	-	90mm	-	50
H12TG	GALVANISED	12mm	-	90mm	-	20
H12T-BLK	SATIN BLACK	12mm	-	90mm	-	1

New

H12GP	ZINC PLATED	12mm	57mm	-	25mm	50
H12GPG	GALVANISED	12mm	57mm	-	25mm	20
H12GP-BLK	SATIN BLACK	12mm	57mm	-	25mm	1

H12B	PVC	12mm	-	-	-	10
------	-----	------	---	---	---	----

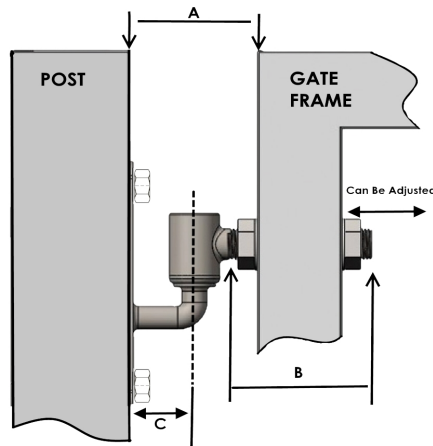
CODE	MATERIAL	PIN SIZE	A	B	C	CTN
------	----------	----------	---	---	---	-----

H20ET	ZINC PLATED	20mm	-	150mm	-	20
-------	-------------	------	---	-------	---	----

H20LEGP	ZINC PLATED	20mm	110mm	-	60mm	20
---------	-------------	------	-------	---	------	----

H20WEGP	ZINC PLATED	20mm	110mm	-	60mm	20
---------	-------------	------	-------	---	------	----

H20B	PVC BLACK	20mm	-	-	-	1
------	-----------	------	---	---	---	---



16mm GUDGEON & TRUNNIONS



Standard Trunnion

New



Extended Trunnion

New



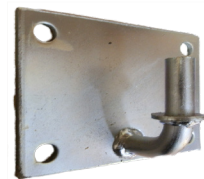
Bush



Standard Pin Gudgeon



Extended Pin Gudgeon



Large Plate Gudgeon



Welded Plate Gudgeon

CODE	MATERIAL	PIN SIZE	A	B	C	CTN
------	----------	----------	---	---	---	-----

H16T	ZINC PLATED	16mm	-	90mm	-	30
H16T-BLK	SATIN BLACK	16mm	-	90mm	-	1
H16TG	GALVANISED	16mm	-	90mm	-	20
SSH16T	STAINLESS STEEL	16mm	-	90mm	-	1

H16ET	ZINC PLATED	16mm	-	120mm	-	50
H16ET200	ZINC PLATED	16mm	-	200mm	-	20
H16ET-BLK	SATIN BLACK	16mm	-	120mm	-	1
H16ETG	GALVANISED	16mm	-	120mm	-	20
SSH16ET	STAINLESS STEEL	16mm	-	120mm	-	1

H16B	PVC BLACK	16mm	-	-	-	10
SSH16B	PVC BLACK	16mm	-	-	-	1

CODE	MATERIAL	PIN SIZE	A	B	C	CTN
------	----------	----------	---	---	---	-----

New

H16GP	ZINC PLATED	16mm	65mm	-	31mm	50
H16GP-BLK	SATIN BLACK	16mm	65mm	-	31mm	1
H16GPG	GALVANISED	16mm	65mm	-	31mm	20
SSH16GP	STAINLESS STEEL	16mm	65mm	-	31mm	10

New

H16EGP	ZINC PLATED	16mm	85mm	-	51mm	50
H16EGP-BLK	SATIN BLACK	16mm	85mm	-	51mm	1
SSH16EGP	STAINLESS STEEL	16mm	85mm	-	51mm	10

H16LGP	ZINC PLATED	16mm	65mm	-	31mm	20
SSH16LGP	STAINLESS STEEL	16mm	65mm	-	31mm	10

H16LEGP	ZINC PLATED	16mm	85mm	-	51mm	20
SSH16LEGP	STAINLESS STEEL	16mm	85mm	-	51mm	10

\* Extended Pin

H16WGP	ZINC PLATED	16mm	65mm	-	30mm	25
H16WEGP	ZINC PLATED	16mm	85mm	-	50mm	25

ALL TRUNNIONS ARE SUPPLIED WITH BUSH, NUTS & WASHERS