

BRACKETS
FENCE & BALUSTRADE

2018

FENCE BRACKET

POWDER COATED

| | CODE | DESCRIPTION | RAIL | CARTON |
|---|---------------------|---|---------|--------|
|  | ● FB38HB | HORIZONTAL 2 FIXING SATIN BLACK | 38x25mm | 200 |
|  | ● FB38H-SB | HORIZONTAL 2 FIXING SAHARA BLACK | 38x25mm | 120 |
|  | ● FB38HPS | HORIZONTAL 2 FIXING PRECIOUS SILVER | 38x25mm | 120 |
|  | ● FB38HB-4PK | HORIZONTAL 2 FIXING HOLES SATIN BLACK 4x FB38HB 8x SCR121420 BLACK | 38x25mm | 50 |
|  | ● FB38VB | VERTICAL 2 FIXING SATIN BLACK | 38x25mm | 250 |
|  | ● FB38PB | PLAIN 2 FIXING SATIN BLACK | 38x25mm | 200 |
|  | ● FB40PB | PLAIN 2 FIXING SATIN BLACK | 40x40mm | 150 |
|  | ● SCB5050B | PLAIN 2 FIXING SATIN BLACK | 50x50mm | 95 |
|  | ● FB5025PSLB | PLAIN 2 FIXING SATIN BLACK | 50x25mm | 150 |
|  | ● FB40PDLB | PLAIN 4 HOLE 2 LUGS SATIN BLACK | 40x40mm | 125 |

* ALL OF OUR FENCE BRACKETS ARE AVAILABLE FOR POWDER COATING

FENCE BRACKETS

HORIZONTAL

| | CODE | DESCRIPTION | RAIL | CARTON |
|--|--------------|------------------------|---------|--------|
|  <i>* 2 FIXING HOLE * CAST ALUMINIUM</i> | FB38H | SINGLE LUG MILL FINISH | 38x25mm | 120 |
|  <i>* 1 FIXING HOLE * CAST ALUMINIUM</i> | FB25H | SINGLE LUG MILL FINISH | 25x25mm | 180 |
| | FB30H | SINGLE LUG MILL FINISH | 30x30mm | 150 |

PLAIN PROFILE

| | CODE | DESCRIPTION | RAIL | CARTON |
|--|------------------|---|---------|--------|
|  <i>* 2 FIXING HOLE * CAST ALUMINIUM</i> | FB38P | SINGLE LUG MILL FINISH | 38x25mm | 90 |
|  <i>* 2 FIXING HOLE * CAST ALUMINIUM</i> | FB40P | SINGLE LUG MILL FINISH | 40x40mm | 80 |
|  <i>* 2 FIXING HOLE * CAST ALUMINIUM</i> | SCB5050 | SINGLE LUG MILL FINISH BEST SUITED TO POSTS 75mm OR GREATER | 50x50mm | 95 |
|  <i>* 2 FIXING HOLE * CAST ALUMINIUM</i> New | FB50P-D | SINGLE LUG MILL FINISH | 50x50mm | 90 |
|  <i>* 2 FIXING HOLE * CAST ALUMINIUM</i> | FB5025PSL | SINGLE LUG MILL FINISH | 50x25mm | 150 |
|  <i>* 1 FIXING HOLE * CAST ALUMINIUM</i> | FB40x8P | SINGLE LUG MILL FINISH | 40x8mm | 150 |
| | FB40x10P | SINGLE LUG MILL FINISH | 40x10mm | 150 |

FENCE BRACKETS

VERTICAL

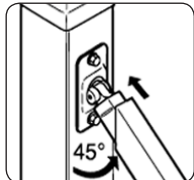


* 2 Fixing Hole
* Cast Aluminium

| CODE | DESCRIPTION | RAIL | CARTON |
|------|-------------|------|--------|
|------|-------------|------|--------|

| | | | |
|-------|------------------------|---------|-----|
| FB38V | SINGLE LUG MILL FINISH | 38x25mm | 120 |
|-------|------------------------|---------|-----|

ADJUSTABLE



| | | | |
|---------|---|----------------------|----|
| RBA2525 | 2 FIXING HOLES BACKING PLATE MILL FINISH | 25x25mm 1.2-1.6mm | 50 |
|---------|---|----------------------|----|

| | | | |
|----------|---|----------------------|----|
| RBA2525B | 2 FIXING HOLES BACKING PLATE SATIN BLACK | 25x25mm 1.2-1.6mm | 50 |
|----------|---|----------------------|----|



| | | | |
|--------|---------------|---------|-----|
| AD3030 | ADAPTOR BLACK | 30x30mm | 100 |
|--------|---------------|---------|-----|

| | | | |
|--------|---------------|---------|-----|
| AD3825 | ADAPTOR BLACK | 38x25mm | 100 |
|--------|---------------|---------|-----|

| | | | |
|--------|---------------|---------|-----|
| AD4040 | ADAPTOR BLACK | 40x40mm | 100 |
|--------|---------------|---------|-----|

MULTI DIRECTIONAL



* 15° VERTICAL 6° HORIZONTAL
* 2 Fixing Hole OFFSET
* Cast Aluminium

| CODE | DESCRIPTION | RAIL | CARTON |
|------|-------------|------|--------|
|------|-------------|------|--------|

| | | | |
|--------|------------------------|---------|-----|
| FB38MD | SINGLE LUG MILL FINISH | 38x25mm | 100 |
|--------|------------------------|---------|-----|

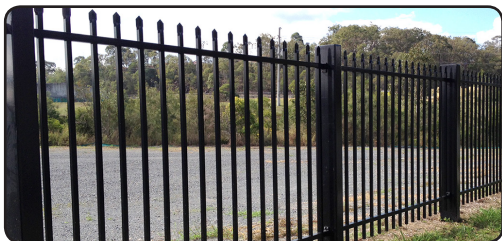
SECURITY BRACKET



* DOUBLE LUG
* 5 POINT FIXING HOLE
* SUITABLE FOR SECURITY FENCING

| CODE | DESCRIPTION | RAIL | CARTON |
|------|-------------|------|--------|
|------|-------------|------|--------|

| | | | |
|-------------|---|---------|----|
| SF40L-BLACK | SECURITY BRACKET MULTI DIRECTIONAL IDEAL FOR SECURITY FENCING SATIN BLACK 130x75x30mm | 40x40mm | 60 |
|-------------|---|---------|----|



* ALUMINIUM SECURITY FENCING AVAILABLE IN MILL FINISH ON REQUEST

FENCE BRACKET

PLAIN PROFILE



* 2 Fixing Hole
* Cast Aluminium

| | | | |
|-----------|------------------------|---------|----|
| FB2538PDL | DOUBLE LUG MILL FINISH | 25x38mm | 90 |
|-----------|------------------------|---------|----|



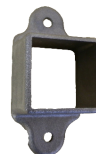
* 2 Fixing Hole
* Cast Aluminium

| | | | |
|-----------|------------------------|---------|-----|
| FB2550PDL | DOUBLE LUG MILL FINISH | 25x50mm | 150 |
|-----------|------------------------|---------|-----|



* 4 Fixing Hole
* Cast Aluminium

| | | | |
|---------|------------------------|---------|----|
| FB40PDL | DOUBLE LUG MILL FINISH | 40x40mm | 60 |
|---------|------------------------|---------|----|



* 2 Fixing Hole
* Cast Aluminium

New

| | | | |
|-----------|------------------------|---------|----|
| FB40PDL-D | DOUBLE LUG MILL FINISH | 40x40mm | 60 |
|-----------|------------------------|---------|----|



* 4 Fixing Hole
* Cast Aluminium

| | | | |
|---------|------------------------|---------|----|
| FB50PDL | DOUBLE LUG MILL FINISH | 50x50mm | 25 |
|---------|------------------------|---------|----|



* 4 Fixing Hole
* Cast Aluminium

New

| | | | |
|-----------|------------------------|---------|----|
| FB50PDL-D | DOUBLE LUG MILL FINISH | 50x50mm | 40 |
|-----------|------------------------|---------|----|

HORIZONTAL



* 2 Fixing Hole
* Cast Aluminium

| | | | |
|---------|------------------------|---------|-----|
| FB25HDL | DOUBLE LUG MILL FINISH | 25x25mm | 150 |
|---------|------------------------|---------|-----|



| | | | |
|---------|------------------------|---------|-----|
| FB30HDL | DOUBLE LUG MILL FINISH | 30x30mm | 130 |
|---------|------------------------|---------|-----|



* 3 Fixing Hole OFFSET
* Cast Aluminium

| | | | |
|----------|------------------------|---------|-----|
| FB38HDLO | DOUBLE LUG MILL FINISH | 38x25mm | 120 |
|----------|------------------------|---------|-----|

PLAIN PROFILE

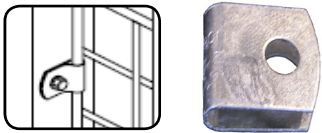


| CODE | DESCRIPTION | SIZE | CARTON |
|------|-------------|------|--------|
|------|-------------|------|--------|

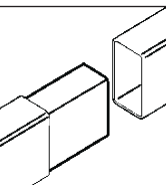
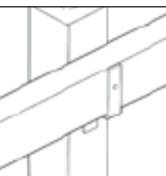
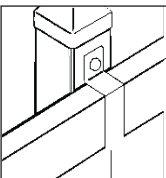
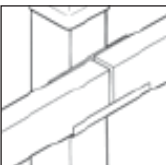
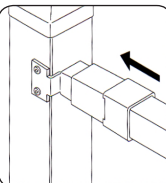
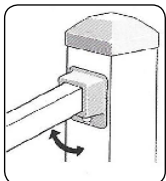
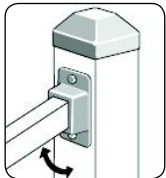
| | | | |
|----------|--|-------------|-----|
| FB2538BL | SINGLE BLACK PLASTIC (2 Fixing Holes) (INTERNAL FITTING) | 38x25x1.6mm | 100 |
|----------|--|-------------|-----|

BRACKET

U CLIPS



ZINC PLATED



| CODE | DESCRIPTION | RAIL/SIZE | CARTON |
|-----------------|---|-------------|--------|
| UC8/10 | RAIL CLIP GALVABOND | 25x29mm | 1000 |
| DFB3825-2D | DOUBLE LUG 2 HOLES DIAGONAL | 38x25mm | 200 |
| DFB4040-2 | DOUBLE LUG 2 HOLES | 40x40mm | 200 |
| DFB4040-2D | DOUBLE LUG 2 HOLES DIAGONAL | 40x40mm | 200 |
| DFB4040-4 | DOUBLE LUG 4 HOLES | 40x40mm | 200 |
| DFB4040-4-BLACK | DOUBLE LUG 4 HOLES SATIN BLACK | 40x40mm | 200 |
| RFB3825-2 | SINGLE LUG 2 HOLES | 38x25mm | 200 |
| TEB3825 | END BRACKET GALVANISED FITS INTERNAL WITH SIDE FIXINGS REQUIRED | 38x25x1.6mm | 100 |
| 127SECURITY | ATTACH TO POST AND RAIL BY POP RIVET MILL FINISH ZINC | 40x40mm | 100 |
| J-BRACKET-GB | TIMBER RAIL JOINER GALVABOND | 120x70x54mm | 100 |
| PS5050GB | POST SADDLE GALVABOND | 50x50mm | 1 Only |
| PS6565GB | POST SADDLE GALVABOND | 65x65mm | 1 Only |
| Z-BRACKET | TIMBER RAIL HOLDER GALVABOND | 75x53mm | 96 |
| RJ3825 | RAIL JOINER GALVABOND (INTERNAL FIT) | 38x25x1.6mm | 50 |

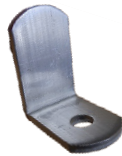
STEP TREADS



| CODE | DESCRIPTION | SIZE | CARTON |
|------|-------------|-------------|--------|
| STGB | GALVABOND | 200x75x55mm | 40 |
| STBB | BLACK STEEL | 200x75x55mm | 40 |

| CODE | DESCRIPTION | SIZE | CARTON |
|-------------|---------------------------------|---------------------|--------|
| AL3136 | 1 HOLE ALUMINIUM | 31x36mm 7mm HOLE | 500 |
| AL3636 | 2 HOLES ALUMINIUM | 36x36mm 7mm HOLE | 500 |
| SL3636 | 2 HOLES GALVANISED STEEL | 36x36mm 7mm HOLE | 500 |
| GPB100 | GALVABOND | 100x65mm | 50 |
| GPB150 | GALVABOND | 150x65mm | 40 |
| GPB200 | GALVABOND | 200x65mm | 30 |
| GPB250 | GALVABOND | 250x65mm | 25 |
| 32PF12030 | PURLIN BOLT ZINC | M12x30mm | 300 |
| HAB4040405 | M12 HOLES GALVANISED HEAVY DUTY | 40x40x40 5mm THICK | 10 |
| HAB5050505 | M12 HOLES GALVANISED HEAVY DUTY | 50x50x50 5mm THICK | 10 |
| HAB4080405 | M12 HOLES GALVANISED HEAVY DUTY | 40x80x40 5mm THICK | 10 |
| HAB50100505 | M12 HOLES GALVANISED HEAVY DUTY | 50x100x50 5mm THICK | 10 |
| HAB8080405 | M12 HOLES GALVANISED HEAVY DUTY | 80x80x40 5mm THICK | 10 |
| AB75100 | ZINC PLATED 4 HOLE | 75x100mm | 200 |

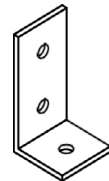
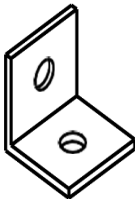
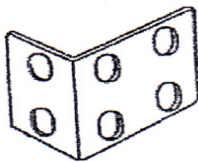
ANGLE BRACKET



AL3136


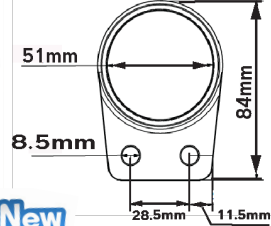
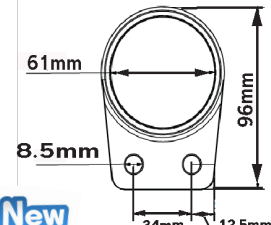


AL3636 SL3636



BRACKET

HANDRAIL CUP BRACKET

| SINGLE LUG | | CODE | DESCRIPTION | FIT | CARTON |
|---|---|--------------|--|------|--------|
|  |  | CB-CB1T50-2H | 1 TAG 2 FIXING HOLE CAST ALUMINIUM MILL FINISH | 50mm | 125 |
| |  | CB-CB1T60-2H | 1 TAG 2 FIXING HOLE CAST ALUMINIUM MILL FINISH | 60mm | 100 |

| SINGLE LUG | | CODE | DESCRIPTION | FIT | CARTON |
|---|---|------------|--|---------|--------|
|  |  | CB-CB1T50 | 1 TAG 1 HOLE CAST ALUMINIUM MILL FINISH | 50mm | 80 |
| |  | CB-CB1T60 | 1 TAG 1 HOLE CAST ALUMINIUM MILL FINISH | 60mm | 65 |
|  |  | CB-RTC | 1 TAG 2 FIXING HOLES FITS OVER TUBE 2 PART EXTRUSION MILL FINISH | 60mm | 100 |
| |  | CB-RTC-TAG | BACK TAG ONLY | - | 100 |
|  |  | CB-OCB-C | 1 TAG 2 FIXING HOLE ALUMINIUM MILL FINISH | 70x40mm | 70 |
| |  | CB-OCB-BP | 1 TAG 2 FIXING HOLES 2 PART EXTRUSION MILL FINISH | 70x41mm | 130 |
| | | CB-OCB-TAG | BACK TAG ONLY | - | 100 |

* SUITS: CAPRAL EXTRUSION

* SUITS: CAPRAL EXTRUSION

HANDRAIL CUP BRACKET

| SINGLE LUG | | CODE | DESCRIPTION | FIT | CARTON |
|---|--|-------------|--|--------------|--------|
|  |  | CB-OCB-A/2 | OVAL BRACKET 1 TAG 2 FIXING ALUMINIUM MILL FINISH | 70 x 30mm | 150 |
| |  | CB-OCB-A/1 | OVAL BRACKET 1 TAG 1 FIXING ALUMINIUM MILL FINISH | 70 x 30mm | 150 |
|  |  | CB-OCB-S | OVAL BRACKET 1 TAG 1 FIXING HOLE ALUMINIUM MILL FINISH | 68 x 44.5mm | 65 |
| |  | CB-OCB-S | OVAL BRACKET 1 TAG 1 FIXING HOLE ALUMINIUM MILL FINISH | 68 x 44.5mm | 65 |
| DOUBLE LUG | | CODE | DESCRIPTION | FIT | CARTON |
|  | | FB31.8R | 2 TAG 2 FIXING HOLES MILL FINISH | 31.8mm | 120 |
| SWAGGED ROUND | | CODE | DESCRIPTION | FIT | CARTON |
|  | | SCB50ND | ROUND EXTRUSION SWAGGED MILL FINISH | 50ID x 50mm | 100 |
|  | | SCB60ND | ROUND EXTRUSION SWAGGED MILL FINISH | 60ID x 50mm | 100 |
|  | | SCB50/110ND | ROUND EXTRUSION SWAGGED MILL FINISH | 50ID x 110mm | 100 |
|  | | SCB60/110ND | ROUND EXTRUSION SWAGGED MILL FINISH | 60ID x 110mm | 100 |
| | | SCB50-DISC | DISC TO SUIT 50mm MILL FINISH | 50mm OD | 100 |
| | | SCB60-DISC | DISC TO SUIT 60mm MILL FINISH | 60mm OD | 100 |

* SUITS: ALSPEC EXTRUSION

* SUITS: ALSPEC EXTRUSION

* SUITS: STEELMARK EXTRUSION