

BASE PLATES - COVERS

2018

POST BASES

Post Bases



Post Base come in a 4 hole fixing or a concealed internal single fixing hole.

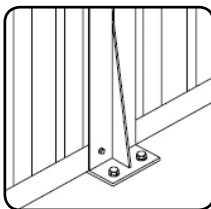
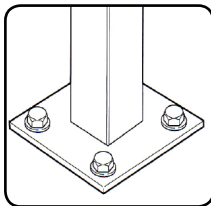
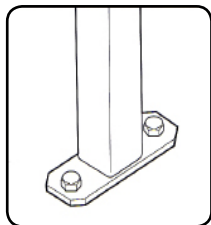
CODE	BASE SIZE	POST SIZE	HEIGHT	FINISH	CTN
PBA4H-50 (4 HOLE)	100x100	50x50x1.6mm	100mm	ALUMINIUM MILL	18
PBA4H-65 (4 HOLE)	106x106	65x65x1.6mm	100mm	ALUMINIUM MILL	20
PBASH (SINGLE HOLE)	100x100	50x50x1.6mm	100mm	ALUMINIUM MILL	18
PBA4H-BLACK (4 HOLE)	100x100	50x50x1.6mm	100mm	SATIN BLACK (POWDERCOATED)	18

Pallet Feet



CODE	BASE SIZE	POST SIZE	HEIGHT	FINISH	CTN
PF130SG	132x132	-	43mm	GALVABOND	40
PF130SB	132x132	-	43mm	BLACK STEEL	40

Post Bracket



* SHARK FINS

CODE	BASE SIZE	POST SIZE	HEIGHT	FINISH	CTN
PB2H50SQ	110x50	50x50	300mm	GALVANISED	25
PB4H50SQ	100x110	50x50	300mm	GALVANISED	25
SF206-GAL	100x100	-	300mm	GALVANISED	20

ALL PRICING REFER TO PRICE BOOK PLEASE QUOTE CODES WHEN ORDERING

BASE PLATES

GALVANISED



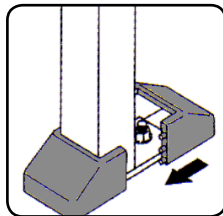
* ALL OUR BASE PLATES HAVE BEEN HDG- HOT DIPPED GALVANISED

CODE	HOLE SIZE	SIZE	HOLES	CTN
GBP150/75/6	14mm	150x75x6mm	2	50
GBP120/100/6	14mm	120x100x6mm	4	50
GBP130/130/10	14mm	130x130x10mm	4	50
GBP150/150/6	14mm	150x150x6mm	4	50
GBP250/250/10	16mm	250x250x10mm	4	10

ZINC PLATED

CODE	HOLE SIZE	SIZE	HOLES	CTN
EGP-2HOLE	12mm	135x75x5mm	2	50

PVC



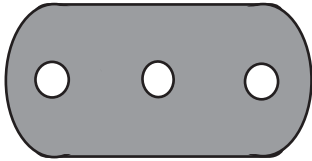
* READY FOR 38x25
* SNAP OUT PANELS ALLOWS FITTING TO SUIT 40x40, 40x25 AND 50x50 POSTS.

CODE	HOLE SIZE	SIZE	HOLES	CTN
PLASTICBLA	38x25mm	120mm	-	30

ALL PRICING REFER TO PRICE BOOK PLEASE QUOTE CODES WHEN ORDERING

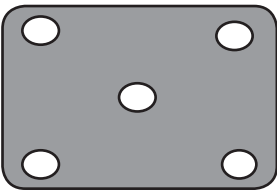
BASE PLATES & COVERS

ALUMINIUM



CODE	HOLE SIZE	FINISH	SIZE	THICK	HOLES	CTN
------	-----------	--------	------	-------	-------	-----

ABP110/50/10	11mm	MILL	110x50mm	10mm	3	100
--------------	------	------	----------	------	---	-----

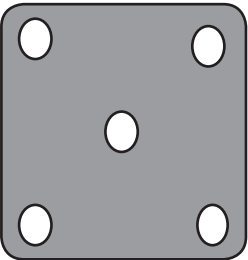


*RADIUS CORNERS

CODE	HOLE SIZE	FINISH	SIZE	THICK	HOLES	CTN
------	-----------	--------	------	-------	-------	-----

ABP135/100/8	11mm	MILL	135x100mm	8mm	5	100
--------------	------	------	-----------	-----	---	-----

ABP150/100/10/5H	11mm	MILL	150x100mm	10mm	5	100
------------------	------	------	-----------	------	---	-----



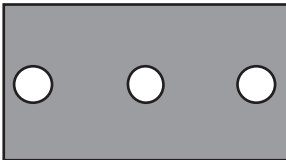
*RADIUS CORNERS

CODE	HOLE SIZE	FINISH	SIZE	THICK	HOLES	CTN
------	-----------	--------	------	-------	-------	-----

ABP100/100/10/5H	11mm	MILL	100x100mm	10mm	5	100
------------------	------	------	-----------	------	---	-----

ABP150/150/10/5h	10mm	MILL	150x150mm	10mm	5	50
------------------	------	------	-----------	------	---	----

CODE	HOLE SIZE	FINISH	SIZE	THICK	HOLES	CTN
------	-----------	--------	------	-------	-------	-----



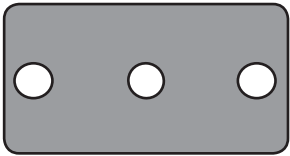
*SQUARE CORNERS

ABP150/80/10	14mm	MILL	150x80mm	10mm	3	100
--------------	------	------	----------	------	---	-----

ABP150/80/6	14mm	MILL	150x80mm	6mm	3	100
-------------	------	------	----------	-----	---	-----

BASE PLATES

ALUMINIUM



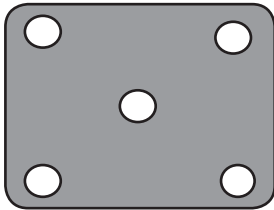
*RADIUS CORNERS

CODE	HOLE SIZE	FINISH	SIZE	THICK	HOLES	CTN
------	-----------	--------	------	-------	-------	-----

ABP135/80/3H	11mm	MILL	135x80mm	10mm	3	100
--------------	------	------	----------	------	---	-----

ABP130/80/10E	11mm	MILL	130x80mm	10mm	3	100
---------------	------	------	----------	------	---	-----

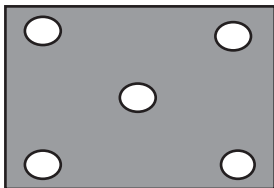
CODE	HOLE SIZE	FINISH	SIZE	THICK	HOLES	CTN
------	-----------	--------	------	-------	-------	-----



*RADIUS CORNERS

ABP135/100/10/5H	11mm	MILL	135x100mm	10mm	5	100
------------------	------	------	-----------	------	---	-----

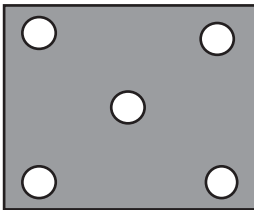
CODE	HOLE SIZE	FINISH	SIZE	THICK	HOLES	CTN
------	-----------	--------	------	-------	-------	-----



*SQUARE CORNERS

ABP120/100/6	11mm	MILL	120x100mm	6mm	5	100
--------------	------	------	-----------	-----	---	-----

CODE	HOLE SIZE	FINISH	SIZE	THICK	HOLES	CTN
------	-----------	--------	------	-------	-------	-----

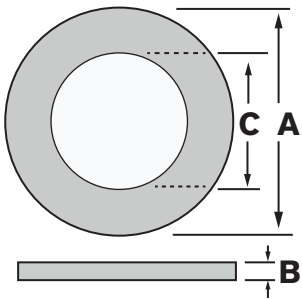


*SQUARE CORNERS

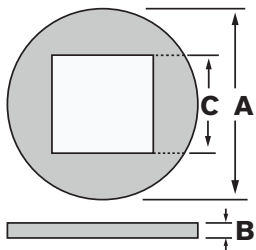
ABP120/100/10	14mm	MILL	120x100mm	10mm	5	100
---------------	------	------	-----------	------	---	-----

BASE COVERS

ALUMINIUM



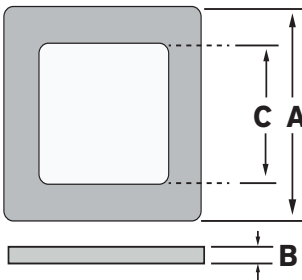
CODE	A	B	C	FINISH	CTN
BCP89-2-51	89mm	2mm	51mm	MILL	100
BCP89-3-51	89mm	3mm	51mm	MILL	100
BCP101-2-51	101mm	2mm	51mm	MILL	100
BCP101-2-61	101mm	2mm	61mm	MILL	100
BCP101-3-51	101mm	3mm	51mm	MILL	100
BCP101-3-61	101mm	3mm	61mm	MILL	100
BCP101-10-51	101mm	10mm	51mm	MILL	10
BCP110-10-51	110mm	10mm	51mm	MILL	50



BCP101-2-51B	101mm	2mm	51mm	SATIN BLACK	100
BCP101-2-51P	101mm	2mm	51mm	PRECIOUS SILVER	100

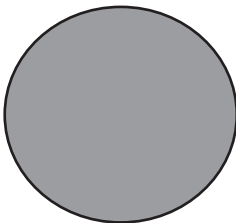
BCP89-51SQ-2	89mm	2mm	51x51mm	MILL	100
--------------	------	-----	---------	------	-----

ALUMINIUM



CODE	A	B	C	FINISH	CTN
BCP41x41	101mm	2mm	41x41mm	MILL	100
BCP51x51	101mm	2mm	51x51mm	MILL	100
BCP52x52	110mm	2mm	52x52mm	MILL	100
BCP65x65	120mm	3mm	65x65mm	MILL	20
BCP75x75	130mm	3mm	75x75mm	MILL	20
BCP110-52-10	110mm	10mm	52x52mm	MILL	30
BCP51x51B	101mm	2mm	51x51mm	SATIN BLACK	100
BCP51x51P	101mm	2mm	51x51mm	PRECIOUS SILVER	100
BCP52x52B	110mm	2mm	52x52mm	SATIN BLACK	100

ALUMINIUM Round



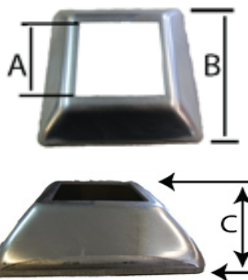
CODE	SIZE	THICK	CTN
RABP101/6	101mm	6mm	100
RABP101/10	101mm	10mm	100

ALL PRICING REFER TO PRICE BOOK

PLEASE QUOTE CODES WHEN ORDERING

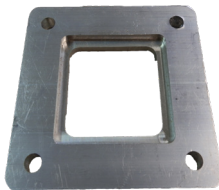
BASE PLATES

PRESSED RAISED



CODE	A	B	C	FINISH	CTN
FC40SQ	41x41mm	90mm	23mm	MILL	100
FC50SQ	51x51mm	100mm	23mm	MILL	100

BASE PLATE
ROUTERED

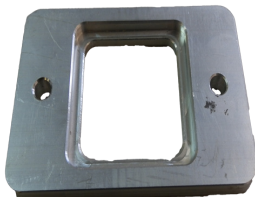


CODE	SIZE	SUIT	THICKNESS	FINISH	CTN
BCP110-52SQ-10	110x110	52x52mm	10mm	MILL	50



BCP110-51RND-10	110x110	50 OD	10mm	MILL	50
-----------------	---------	-------	------	------	----

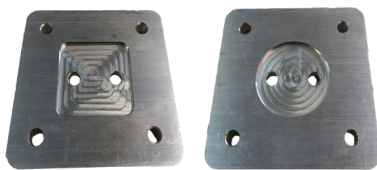
New



BCP12878-10	128x78	51x51	10mm	MILL	50
-------------	--------	-------	------	------	----



BCP110-10-RND	110OD	50Ø	10mm	MILL	50
---------------	-------	-----	------	------	----



*SIDE 1

*SIDE 2

BCP-110-10-SQRND	110x110	50 OD & 51x51	10mm	MILL	50
------------------	---------	---------------	------	------	----

ALL PRICING REFER TO PRICE BOOK

PLEASE QUOTE CODES WHEN ORDERING