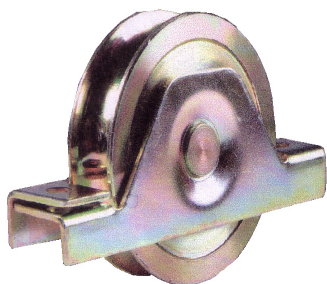


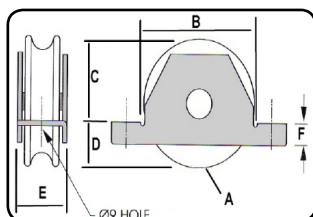
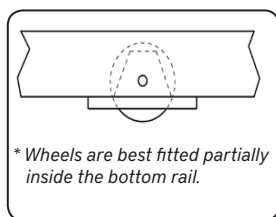
AUTOMATION Accessories

2018

GATE WHEELS



CODE	TRACK SIZE	KG RATED	INFORMATION	CTN
SW90/16	16mm	190kg	SINGLE BEARING ZINC	6
SWJ90/20	20mm	300kg	DOUBLE BEARING ZINC	10
SW120/20HD	20mm	400kg	DOUBLE BEARING ZINC	1



TYPE	A	B	C	D	E	F
SW90/16	90	100	80	20	31	15
SWJ90/20	90	95	70	40	32	17
SW120/20HD	120	120	100	30	35	15

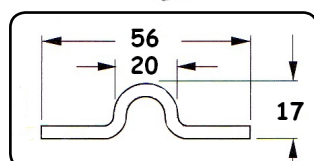
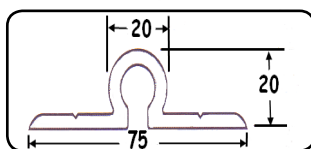
* All measurements are in mm

CODE	TRACK SIZE	KG RATED	INFORMATION	CTN
310-100S	20mm	220kg	BOLT THROUGH 100 Ø	1
300551	20mm	450kg	BOLT THROUGH 120 Ø	1
300552	20mm	575kg	BOLT THROUGH 160 Ø	1



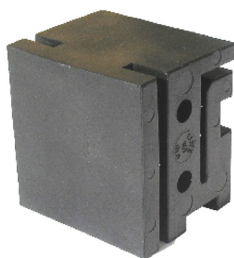
339-120	20mm	1200kg	HEAVY DUTY DOUBLE WHEEL 4 BALL BEARINGS PER SET 117 Ø	1
---------	------	--------	---	---

TRACK



CODE	TRACK SIZE	INFORMATION	CTN
SGTA/5.8	19- 20mm	ALUMINIUM 5800mm LENGTH	4
SGTA3	19-20mm	ALUMINIUM 2900mm LENGTH	8
SGTS/3	19-20mm	GALVABOND STEEL 3000mm LENGTH	10
SGTS/6	19-20mm	GALVABOND STEEL 6000mm LENGTH	1

NOTE: FREIGHT LENGTH SURCHARGES APPLY ON SELECTED LINE

Block & Channel

Example Block ,Channel & Mid-rail

CODE**DESCRIPTION****CARTON****NSGB**

NYLON GATE BLOCK BLACK

10

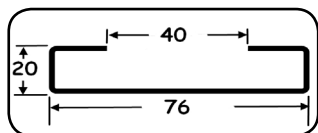
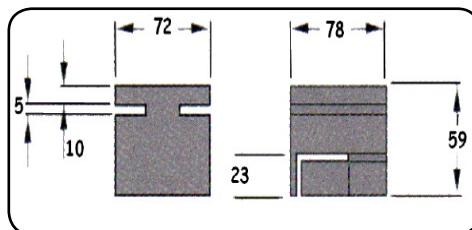
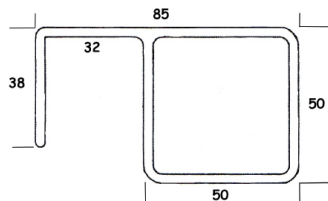
NSGBW

NYLON GATE BLOCK WHITE

10



***SAFETY NOTE - Guide Block is a guide only It does not support the gate by itself.**

**MID RAIL****SGC**SLIDING CHANNEL 300mm LONG
TO SUIT BLOCK
ALUMINIUM

10

SGC-BSLIDING CHANNEL 300mm LONG
TO SUIT BLOCK
POWDER COATED BLACK

10

A-5050-MIDRAIL-5.8MID RAIL FOR THE NSGB
SOLD IN 5800mm LENGTHS
ALUMINIUM

1 LENGTH

Jockey Wheels**CODE****DESCRIPTION****CARTON****JOCKEYWHEEL**STANDARD JOCKEY WHEEL
REDUCES THE SAGGING ON GATES
ATTACHES FROM BEHIND THE GATE 100mm
DIAMETER WHEEL ZINC PLATED

10

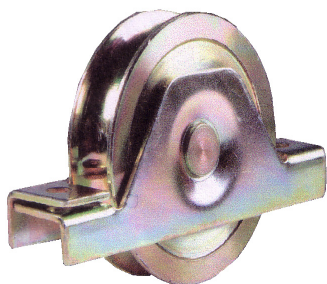
JOCKEYWHEEL-HDHEAVY DUTY JOCKEY WHEEL.
BALL BEARING ZINC PLATED
100mm DIAMETER WHEEL

1

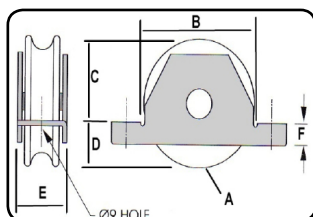
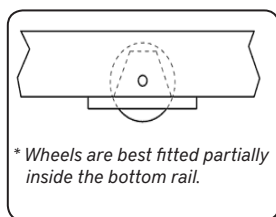
JOCKEYWHEEL-LARGELARGE WHEEL DIAMETER (200mm) FOR
GATES THAT REQUIRE A HIGH CLEARANCE.
ZINC PLATED

1

GATE WHEELS



CODE	TRACK SIZE	KG RATED	INFORMATION	CTN
SW90/16	16mm	190kg	SINGLE BEARING ZINC	6
SWJ90/20	20mm	300kg	DOUBLE BEARING ZINC	10
SW120/20HD	20mm	400kg	DOUBLE BEARING ZINC	1



TYPE	A	B	C	D	E	F
SW90/16	90	100	80	20	31	15
SWJ90/20	90	95	70	40	32	17
SW120/20HD	120	120	100	30	35	15

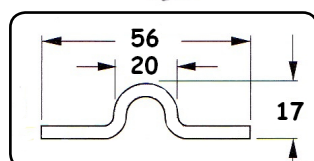
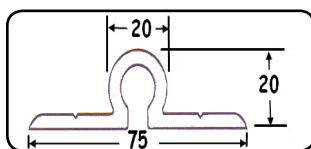
* All measurements are in mm

CODE	TRACK SIZE	KG RATED	INFORMATION	CTN
310-100S	20mm	220kg	BOLT THROUGH 100 Ø	1
300551	20mm	450kg	BOLT THROUGH 120 Ø	1
300552	20mm	575kg	BOLT THROUGH 160 Ø	1



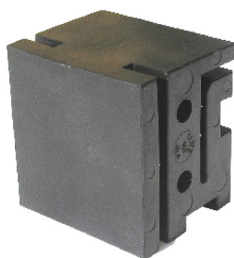
339-120	20mm	1200kg	HEAVY DUTY DOUBLE WHEEL 4 BALL BEARINGS PER SET 117 Ø	1
---------	------	--------	---	---

TRACK



CODE	TRACK SIZE	INFORMATION	CTN
SGTA/5.8	19- 20mm	ALUMINIUM 5800mm LENGTH	4
SGTA3	19-20mm	ALUMINIUM 2900mm LENGTH	8
SGTS/3	19-20mm	GALVABOND STEEL 3000mm LENGTH	10
SGTS/6	19-20mm	GALVABOND STEEL 6000mm LENGTH	1

NOTE: FREIGHT LENGTH SURCHARGES APPLY ON SELECTED LINE

Block & Channel

Example Block ,Channel & Mid-rail

CODE**DESCRIPTION****CARTON****NSGB**

NYLON GATE BLOCK BLACK

10

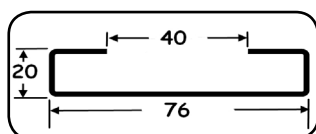
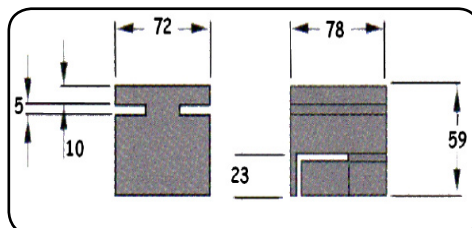
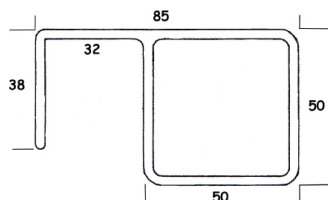
NSGBW

NYLON GATE BLOCK WHITE

10



***SAFETY NOTE - Guide Block is a guide only It does not support the gate by itself.**

**MID RAIL****SGC**SLIDING CHANNEL 300mm LONG
TO SUIT BLOCK
ALUMINIUM

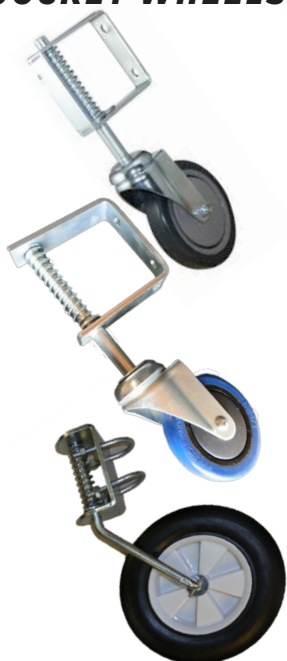
10

SGC-BSLIDING CHANNEL 300mm LONG
TO SUIT BLOCK
POWDER COATED BLACK

10

A-5050-MIDRAIL-5.8MID RAIL FOR THE NSGB
SOLD IN 5800mm LENGTHS
ALUMINIUM

1 LENGTH

Jockey Wheels**CODE****DESCRIPTION****CARTON****JOCKEYWHEEL**STANDARD JOCKEY WHEEL
REDUCES THE SAGGING ON GATES
ATTACHES FROM BEHIND THE GATE 100mm
DIAMETER WHEEL ZINC PLATED

10

JOCKEYWHEEL-HDHEAVY DUTY JOCKEY WHEEL.
BALL BEARING ZINC PLATED
100mm DIAMETER WHEEL

1

JOCKEYWHEEL-LARGELARGE WHEEL DIAMETER (200mm) FOR
GATES THAT REQUIRE A HIGH CLEARANCE.
ZINC PLATED

1